

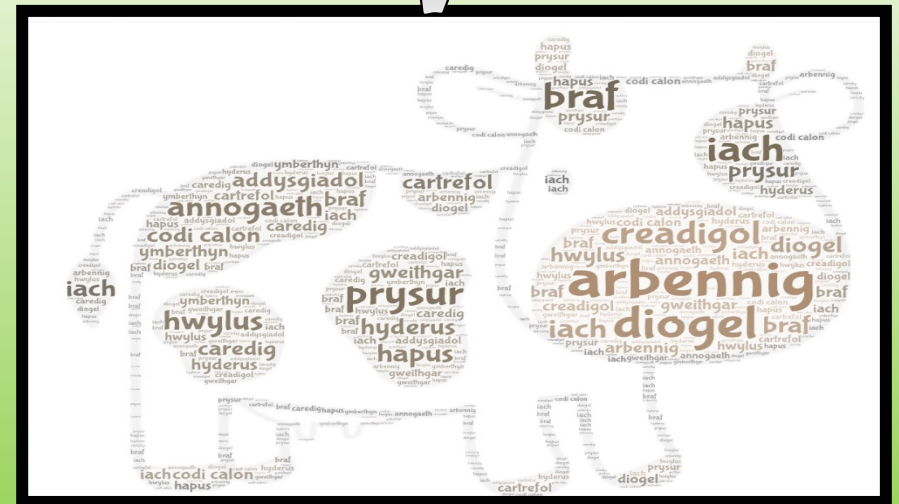




Ysgol Bro Elwern is a Welsh rural school. Welsh is the main language and medium of the school. The School is situated in the village of Gwyddelwern which has a population of around 500 people (2020). The school is surrounded by the natural greenery of Rhyd Ddu and Bryn Gwenallt hills. The School is a stone's throw from the saw mill and old granite quarries of Wern Ddu and sandstone quarry of Graig Lelo.

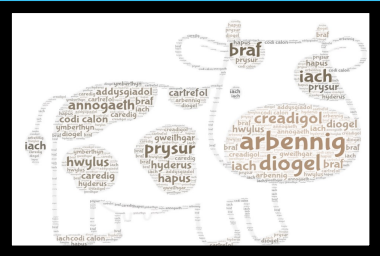
# Learn Together, Grow as a Community

40% of the children at the School come from Welsh speaking homes. The School is a feeder school for Ysgol Uwchradd Brynhyfryd in Ruthin, Ysgol Godre'r Berwyn in Bala and Ysgol Dinas Bran in Llangollen.





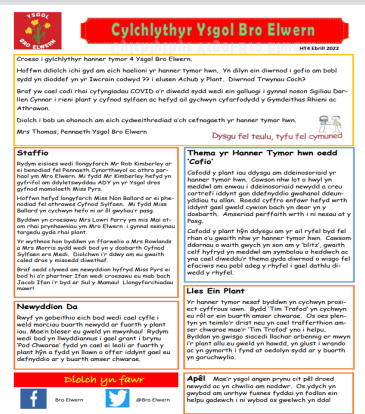
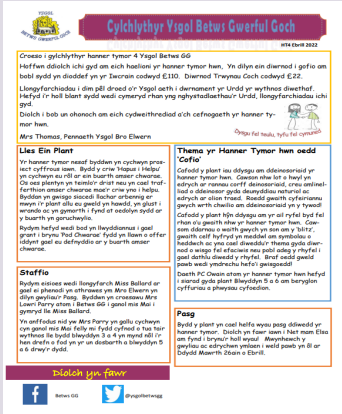




## Communicating with Parents and/or Carers

### Our Parents/Carers

We communicate effectively and regularly with parents/carers in order to build a positive relationship. In order to support and promote effective mutual engagement with parents/carers, we use a variety of different methods such as; face to face, digitally via email and our newsletter every half term. Our social media pages are updated weekly to showcase the children's activities.



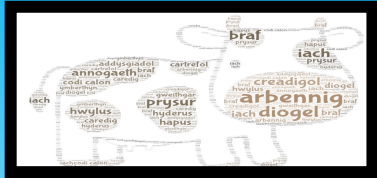
## Our Community

### Our Community

Our community is very important to us, we visit the local Churches and Chapels regularly. We make the most of experiences in the community in order to inform our theme work. Examples of this are

- a visit to a local dairy farm as part of our 'Where Our Food Come From' theme, to see the cows being milked and the milk being turned into butter on the farm.
- regular visits to the local centre for growth mindset sessions and dance sessions with a local trainer.
- 'Doorstep Greetings' trips to bring a smile to the faces of the village residents and to chat and to hear stories from people in our community.





# Wellbeing and Health



The Health and Wellbeing of all is a focus and a high priority across everything we do at Ysgol Bro Elwern and Ysgol Betws GG. A 'Dydd Llun Lles' ('Wellbeing Monday') is held weekly, where the children are given the opportunity to experience various sessions including anti-bullying, growth mindset and circle time. On 'Pnawn Gwener Gwyrdd' ('Green Friday Afternoon'), the children can choose activities that promote working together, time outdoors or quiet activities, while a small group of children are given the opportunity, in turn, to have a small afternoon tea with their teacher to reflect on the week and to discuss anything that is worrying them.

Learners' wellbeing questionnaires are distributed twice a year and the School Council and our Wellbeing Ambassadors look at the results. As a result, we have a team of children who are responsible for looking after other children on the yard during play time, a feelings tracking session is held every morning in each class, and there is a 'What is on your mind' box in the School reception.



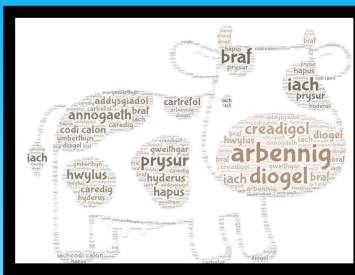
Mae 22 rhannwr yn helpu i helpu 14 rhannwr yn helpu wellthrou!	Nid oes rhaid i bobw fedd yn helpu SCS amser, mae'n iawn teimlo'n dda wrththrou!
Os iech rhyddwr yn ein gwneud i 22 rhannwr yn helpu wrththrou mae'n helpu! Mae'n iawn teimlo'n dda wrththrou!	Mae'n helpu i helpu wrththrou mae'n helpu! Mae'n iawn teimlo'n dda wrththrou!
Mae 20 yn helpu i helpu 14 rhannwr yn helpu 14 rhannwr yn helpu!	Os iech rhyddwr yn ein gwneud i 22 rhannwr yn helpu wrththrou mae'n helpu! Mae'n iawn teimlo'n dda wrththrou!
Mae'n helpu i helpu wrththrou mae'n helpu! Mae'n iawn teimlo'n dda wrththrou!	Mae'n helpu i helpu wrththrou mae'n helpu! Mae'n iawn teimlo'n dda wrththrou!
Mae'n helpu i helpu wrththrou mae'n helpu! Mae'n iawn teimlo'n dda wrththrou!	Mae'n helpu i helpu wrththrou mae'n helpu! Mae'n iawn teimlo'n dda wrththrou!
Mae'n helpu i helpu wrththrou mae'n helpu! Mae'n iawn teimlo'n dda wrththrou!	Mae'n helpu i helpu wrththrou mae'n helpu! Mae'n iawn teimlo'n dda wrththrou!
Mae'n helpu i helpu wrththrou mae'n helpu! Mae'n iawn teimlo'n dda wrththrou!	Mae'n helpu i helpu wrththrou mae'n helpu! Mae'n iawn teimlo'n dda wrththrou!

**E  
I  
C  
H  
Y  
S  
G  
O  
L  
C  
H  
I  
2  
0  
2  
1**

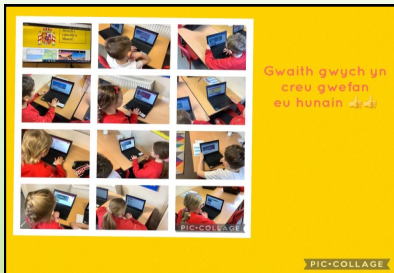
Chwylgynllunio: Holiaduron Lles Pnawn Gwener Ysgol Bro Elwern.







# What is important to us in each Area of Learning?



What Matters Statements for the 6 Areas of Learning and Experience					
Expressive Arts	Health and Wellbeing	Humanities	Mathematics and Numeracy	Languages, Literacy & Communication	Science and Technology
Exploring the expressive arts is essential to developing artistic skills and knowledge and it enables learners to become curious and creative individuals	Developing physical health and well-being has lifelong benefits	Enquiry, exploration and investigation inspire curiosity about the world, its past, present and future	The number system is used to represent and compare relationships between numbers and quantities	Languages connect us	Being curious and searching for answers is essential to understanding and predicting phenomena
Responding and reflecting, both as artist and audience, is a fundamental part of learning in the expressive arts	How we process and respond to our experiences affects our mental health and emotional well-being	Events and human experiences are complex, and are perceived, interpreted and represented in different ways	Algebra uses symbol systems to express the structure of mathematical relationships	Understanding languages is key to understanding the world around us	Design thinking and engineering offer technical and creative ways to meet society's needs and wants
Creating combines skills and knowledge, drawing on the senses, inspiration and imagination	Our decision-making impacts on the quality of our own lives and the lives of others	Our natural world is diverse and dynamic, influenced by processes and human actions	Geometry focuses on relationships involving shape, space and position, and measurement focuses on quantifying phenomena in the physical world	Expressing ourselves through languages is key to communication	The world around us is full of living things which depend on each other for survival
	How we engage with social influences shapes who we are, and affects our health and well-being	Human societies are complex and diverse, and shaped by human actions and beliefs	Statistics represent data, probability models chance, and both support informed inferences and decisions	Literature fires imagination and inspires creativity	Matter and the way it behaves defines our universe and shapes our lives
	Healthy relationships are fundamental to our well-being	Informed, self-aware citizens engage with the challenges and opportunities that face humanity, and are able to take considered and ethical action			Forces and energy provide a foundation for understanding our universe
					Computation is the foundation for our digital world

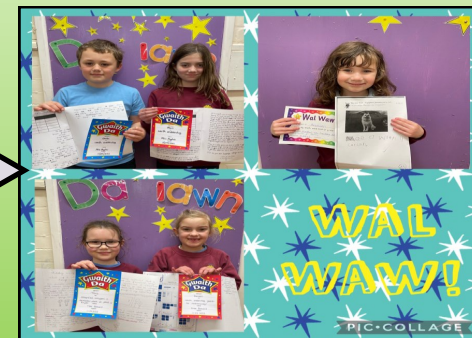
## Mandatory Elements of the Curriculum

These elements will be incorporated into our Curriculum;

Religion, Values and Ethics

Relationships and Sexuality Education

Literacy, Numeracy and Digital Competency Skills





# We aim to develop learners.....



Moli Mentrus



Glesni Gwybodus



Prys Parchus

### The four purposes

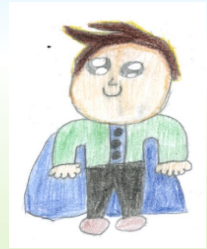
These four purposes will be the foundation of everything you learn.

All children and young people will get support to be:

- **ambitious, capable learners** who are ready to learn throughout their lives
- **enterprising, creative contributors** who are ready to play a full part in life and work
- **ethical, informed citizens** who are ready to take part in Wales and the world
- **healthy, confident individuals** who are ready to lead fulfilling lives as valued members of society.



Cadi Creadigol



Hari Hyderus

## We celebrate our learners' success



## DA IAWN BLANT

HANNER TYMOR PRYSUR • FEITHRIN DYSGWYR

Mentrus	Creadigol	
	Iachus	Parchus
Hyderus	Gwybodus	

PIC•COLLAGE



Iestyn Iachus

By using our Four Purposes' Characters designed by the children

# We aim to develop learners.....



Gwen



Ianto Iach



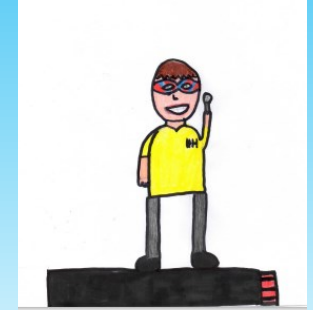
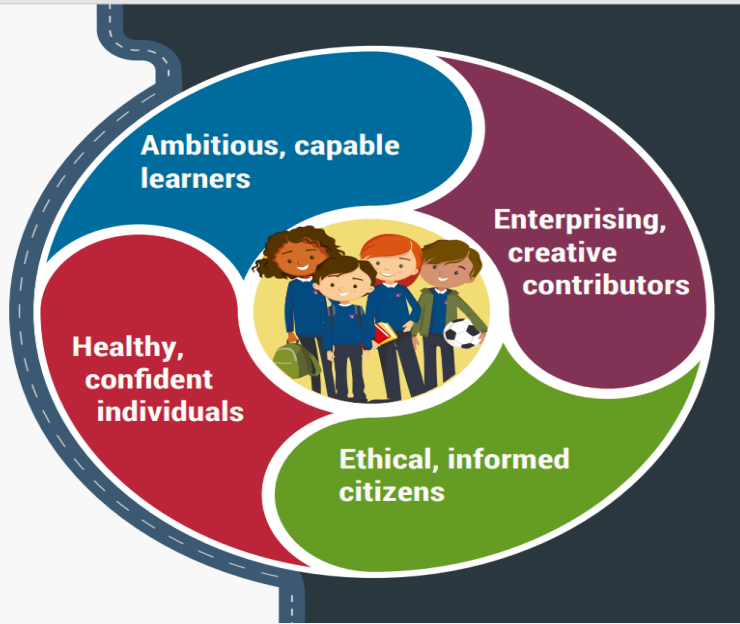
Mari Mentrus

## The four purposes

These four purposes will be the foundation of everything you learn.

All children and young people will get support to be:

- **ambitious, capable learners** who are ready to learn throughout their lives
- **enterprising, creative contributors** who are ready to play a full part in life and work
- **ethical, informed citizens** who are ready to take part in Wales and the world
- **healthy, confident individuals** who are ready to lead fulfilling lives as valued members of society.



Huw Hyderus



Ceri Creadigol

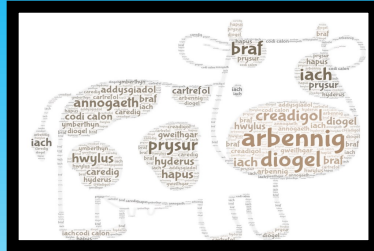
We celebrate our learners' success...



By using our Four Purposes' Characters designed by the children

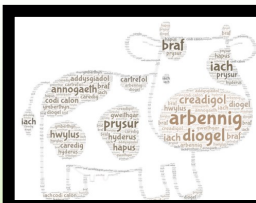


Penri Parchus



# Assessment and Progression

We strongly believe that each child deserves the opportunity to progress in their learning and that is the main purpose of our assessment procedures in our schools. We gain a complete picture of each child's development in their understanding, their skills and their knowledge as they progress through the early years of their education. We place an emphasis on the importance of working together and a shared understanding of progression across practitioners at both schools and that this develops from regular professional conversations with each other, parents and carers. This is how we respond to the Assessment Purposes of the Curriculum....



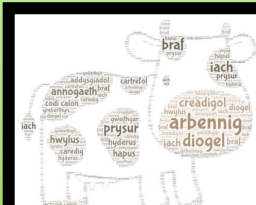
## Demonstrating progress

From joining the school until they leave, a sample of each learner's work is collated and kept in a personal file. A sample is kept of written, oral, reading and numeracy work, as well as their wellbeing and emotional development.



## Daily continuous support for our learners

Consistent assessment systems in the classroom give practitioners and the learners a clear picture of their achievement and what their next steps are. It is important to us that each child takes responsibility for their own progression with guidance and encouragement.



## Reflection and refining individual learners' progression over time

We ensure that specific periods are timetabled for professional conversations in order to discuss progression further. This is also an opportunity to ensure effective transition between classes and the secondary schools.



# Federated Schools



## Two Schools, One Family

It is the intention of the Schools to review and amend our provision of the curriculum continuously including regular consultation with parents, learners and other school stakeholders.

Bro Elwern 01490 412332 Betws GG 01490 460315

[www.ysgolbroelwern.cymru](http://www.ysgolbroelwern.cymru)

[www.ysgolbetwsagg.cymru](http://www.ysgolbetwsagg.cymru)

